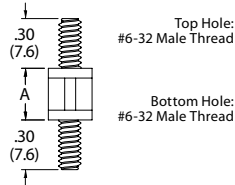




# MALE/MALE & FEMALE/FEMALE STANDOFFS

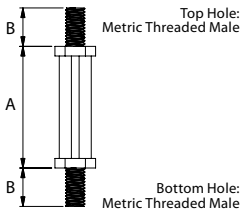
## CBS-TMM Threaded Male Spacer



- Both ends can be secured with a nylon hex nut item number HN-6-32-01 (see page 813)
- Material: Nylon 6/6
- Color: Natural
- Flame Class: UL94 V-2

Item No.	A	Bulk Pack Qty.
CBS-TMM-2-01	1/8 (3.2)	1000
CBS-TMM-4-01	1/4 (6.4)	1000
CBS-TMM-6-01	3/8 (9.5)	1000
CBS-TMM-8-01	1/2 (12.7)	1000
CBS-TMM-10-01	5/8 (15.9)	1000
CBS-TMM-12-01	3/4 (19.1)	1000
CBS-TMM-14-01	7/8 (22.2)	1000
CBS-TMM-16-01	1 (25.4)	1000

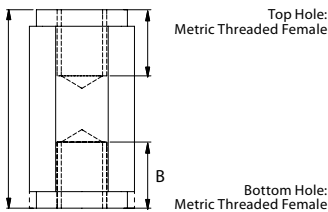
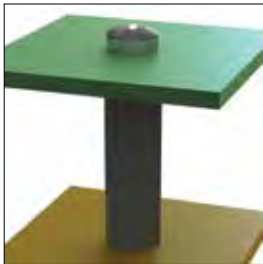
## HTSN-3 Metric Hex Male/Male Threaded Standoff



- Both ends can be secured with a nylon hex nut (see page 813)
- Material: Nylon 6/6
- Color: Black
- Flame Class: UL94 HB

Item No.	Thread	A mm	B mm	Across Flats mm	Bulk Pack Qty.
HTSN-M3-6-3	M3	6	6	6	500
HTSN-M3-8-3	M3	8	6	6	500
HTSN-M3-10-3	M3	10	6	6	500
HTSN-M4-6-3	M4	6	6.4	6	500
HTSN-M4-8-3	M4	8	6.4	6	500
HTSN-M4-10-3	M4	10	6.4	6	500

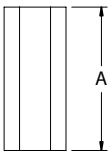
## HNSM Metric Hex Threaded Standoff



- Internal threads mounted with an M3 or M4 screw
- Material: 25% Glass Filled Nylon 6
- Color: Black

Item No.	Thread	Across Flats mm	L mm	B mm	Bulk Pack Qty.
HNSM3-13-5.5-1	M3	5.5	13	10 Max	500
HNSM3-20-5.5-1	M3	5.5	20	10 Max	500
HNSM3-28-6-1	M3	6	28	10 Max	500
HNSM3-30-5.5-1	M3	5.5	30	10 Max	500
HNSM4-13-8-1	M4	8	13	10 Max	500
HNSM4-20-8-1	M4	8	20	10 Max	500
HNSM4-30-8-1	M4	8	30	10 Max	500

## HS Hex Self Tapping Spacer



Hole:  
For #4, #6 or #8  
Self Tapping Screw



- Mounted with a metal self-tapping screw that threads the plastic (Pg 774)
- Material: CPVC
- Color: Grey
- Flame Class: UL94 V-0

Item No.	Self Tapping Screw	L Spacer Length	ID	Across Flats	Bulk Pack Qty.
HS-4-3	#4	3/8 (9.5)	.102 (2.6)	.187 (4.8)	1000
HS-4-4	#4	1/2 (12.7)	.102 (2.6)	.187 (4.8)	1000
HS-4-6	#4	3/4 (19.1)	.102 (2.6)	.187 (4.8)	1000
HS-4-7	#4	7/8 (22.2)	.102 (2.6)	.187 (4.8)	1000
HS-4-8	#4	1 (25.4)	.102 (2.6)	.187 (4.8)	1000
HS-6-4	#6	1/2 (12.7)	.110 (2.8)	.250 (6.4)	1000
HS-6-5	#6	5/8 (15.9)	.110 (2.8)	.250 (6.4)	1000
HS-6-6	#6	3/4 (19.1)	.110 (2.8)	.250 (6.4)	1000
HS-6-7	#6	7/8 (22.2)	.110 (2.8)	.250 (6.4)	1000
HS-6-8	#6	1 (25.4)	.110 (2.8)	.250 (6.4)	1000
HS-6-10	#6	1-1/4 (31.8)	.110 (2.8)	.250 (6.4)	500
HS-6-12	#6	1-1/2 (38.1)	.110 (2.8)	.250 (6.4)	500
HS-6-14	#6	1-3/4 (44.5)	.110 (2.8)	.250 (6.4)	500
HS-8-8	#8	1 (25.4)	.141 (3.6)	.375 (9.5)	1000
HS-8-14	#8	1-3/4 (44.5)	.141 (3.6)	.375 (9.5)	500
HS-8-16	#8	2 (50.8)	.141 (3.6)	.375 (9.5)	500
HS-8-24	#8	3 (76.2)	.141 (3.6)	.375 (9.5)	500